

# Snare Drums of a Century

## THE ANNIVERSARY COLLECTION

The Ludwig Legacy was built on a foundation of legendary snare drums. Now in our 100th year, Ludwig pays homage to the drums that made us great with the Snare Drums of a Century Collection. The Triumphal, the Black Beauty, the Supraphonic; all represented in grand tribute models that will be limited to 100 models each and available at select Ludwig Platinum dealers worldwide. These are not just snare drums to be appreciated for tone and function, they are truly a piece of history.

**The 1928 Gold Triumphal Reissue (LGT100ANV):** Hand-Engraved 24k Gold Plated Brass Shell

The crown jewel of the Ludwig collection, the Triumphal was only produced between 1926 and 1928. Every element of the 100th Anniversary reissue has been hand-crafted in the Italian Alps to the exact specifications of the original. Production is limited to 100 pieces., each engraved with a year in Ludwig's production history.

For more information, go to [www.goldtriumphal.com](http://www.goldtriumphal.com).

**The Chief Supraphonic Collection:** Beaded Titanium Shell

In tribute to Bill Ludwig II's pioneering legacy, the original 6.5"x14" Titanium Supraphonic snare (L2006) is joined by the first 5.5"x14" Supraphonic (L2008) in Ludwig's history for a limited production run of 100. All feature Ronn Dunnett's trademark thin shell, piston snare throw-off, and adjustable air vent, as well as the newly-minted "Chief" Keystone Badge.



**The 100th Anniversary Black Beauty (LB2009BT):** Hand-engraved Nickel-plated Brass w/Brass Hardware

Often imitated but never duplicated, Ludwig set the standard for all others to follow with the Black Beauty. The 100th Anniversary edition, hand-engraved and numbered by master craftsman John Aldridge, is more ornately appointed than all others before it, and features the mark of three generations of Ludwig history. "Chief" Keystone Badge.

**The 100th Anniversary Black Magic (LW6514ANV):** Laser-engraved Nickel-plated Brass Shell

A tribute workhorse for the performing musician, The 100th Anniversary Black Magic comes in 5"x14" and 6.5"x14" models and features a beautifully scrolled shell, precision etched into the Black Nickel plating with a computer-controlled laser.

Sapele - LCEX6514TXSA



AmericanWalnut / Maple - LCEX6514TXWA

Bubinga - LCEX6514TXBU

**Epic Centurion Exotic Snares**

Further pushing the Epic shell hybrid concept, Centurion models give discerning players the choice of 10-ply Bubinga, 12-ply Sapele with Maple reinforcement rings, or 8-ply American Walnut Burl over Canadian Maple. These 6.5"x14" models come standard with tube lugs and 2.3mm hoops (pictured with optional die-cast hoops.)

# Celebrate 100 Years OF CRAFTSMENSHIP WITH US



WINTER 2009 UPDATE

# LEGACY EXOTIC

## SERIES DRUMS

TOMORROW'S VINTAGE, TODAY.

**Legacy Exotic:** 3-ply Maple/Poplar/Maple, 1-ply Reinforcement rings, Exotic Sumauma outer

By applying many of the same shell making properties we have refined over the past century, Ludwig's flagship professional drum line is going to the next level. Introducing new Legacy Exotic, a stunning rethink to a modern classic. After locating several felled logs from Africa and Australia, three exotic hardwoods made the final cut for their visual elegance and tonal quality: Sumauma, Lacewood, and Black Limba. Combining these woods with inner and outer plies of North American Maple and the traditional single Poplar core ply, the rich sonic warmth of Legacy's shell moves to a new tonal spectrum. Legacy's trademark rounded bearing edge creates a perfect compliment to the 1/4" single-ply Maple reinforcement rings. Throughout 2009, four finishes in each of these woods will be introduced. These inaugural Legacy Exotic kits will be in limited supply, making them the perfect addition to Ludwig's illustrious vintage tradition.



Legacy Exotic Sumauma in Redburst (A3) Lacquer\*

Features a 20"X22" Bass Drum (LLB402XXA3), 6.5"X14" Snare Drum (LLS464XXA3), 7"X10" Tom with Vibraband (LLT470XXA3WR), 8"X12" Tom with Vibraband (LLT482XXA3WR), 12"X14" Floor Tom (LLF424XXA3), and 14"X16" Floor Tom (LLF446XXA3).

# LIVERPOOL

## The Kit That Launched 4 a Revolution

**Liverpool 4:** 3-ply Maple/Poplar/Maple, 1-ply Reinforcement rings, Original Black Oyster Pearl Finish

February 9, 1964. Black Oyster Pearl had been available as a Ludwig finish before this date, but a well-televised performance by a certain band from Liverpool made it a phenomenon. In the spirit of the original "Ringo Kit", Ludwig is proud to present the Liverpool 4 in Original Black Oyster Pearl finish. The Liverpool 4 hosts the configuration and 3-ply shell heard most on the timeless recordings of yesterday, and is the first Legacy kit to feature standard-sized Classic lugs and our new Rail Console tom mount. The first 100 sets will feature Ludwig's 100th Anniversary badge on each drum, making them another benchmark in the classic Ludwig timeline.



## ANNIVERSARY EDITION STAINLESS STEEL KIT

VISION. TRADITION. PRECISION. POWER.

**Stainless Steel:** .5mm Stainless Steel in Two Finish Options

The 1970's were a time of great innovation at Ludwig's Damen Ave. facility. True to Ludwig's tradition of innovation, Stainless Steel kits were forged for unprecedented volume, sustain, and power in heavy music. Ludwig's new Anniversary Edition Stainless Steel Pro Beat outfit is a true testament to our timeless roots. Only 100 kits will be made available, all of them hand-rolled and tooled by Drumsmith Ronn Dunnett. The first 50 feature polished chrome steel finish and Brass hardware; the second 50 with brushed stainless finish and chrome hardware. This ultra-thin stainless shell and bearing edge of each drum create a tone of such enormity that they simply have to be experienced to be believed.

Anniversary Edition Stainless Steel 3-pc. Kit w/ Brass Hardware\*

Features 14"X24" Bass Drum (LB844XXSSB), 16"X16" Floor Tom (LF866XXSSB) and 9"X13" Tom (LT893LMSSB).



\*All kits are shell packs. Hardware and cymbals not included.

Legacy Classic Liverpool 4\*

Features 14"X22" Bass Drum (LLB342RC1QWC), 16"X16" Floor Tom (LLF366XX1QWC), 9"X13" Tom (LLT393LM1QWC) and 5"X14" Snare (LLS354XX1Q).



\*All kits are shell packs. Hardware and cymbals not included.

The hallmark of the Ludwig sound has always begun with the shell. As we enter the 100th year of our manufacturing history, Ludwig returns to its roots by experimenting with multiple-species shell composition, for new horizons in tonal variety. The result is Epic, a new series of drums crafted for every player from the gigging workhorse to the seasoned pro.

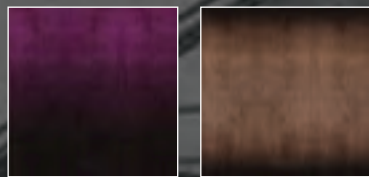
**Epic X-Over:** Walnut Inner/Outer, Poplar Core, 2-ply Birch Reinforcement Rings

American Walnut is known not only for its dark color and grain but also for its deeper tonality and warmth. The new Epic X-Over expands on darker overtones by employing a Poplar core to an inner and outer Walnut shell. 3-ply Birch reinforcement rings are added for extra cut and focus, resulting in a sound that speaks in the lower register with power and clarity.

*Epic X-Over Arena kit (LRX24AX) in Redburst (RB)\**

*Features 20"x24" virgin Kick Drum, a 6.5x14" Snare, 8"x12" Tom, and 16"x16" Floor Tom. (shown with optional 14"x14" Floor Tom)*

Epic X-Over is available in the following finishes:



Purple Passion (PP) Natural/Blackburst (NB)

**Epic X-Over Striped:** Walnut/Maple/Walnut Inner and Outer, Poplar Core, 2-ply Birch Reinforcement Rings

Segmented Shell Crafting: a concept that is not a stranger to Ludwig engineers. The theory is that if the darker quality of Walnut can be fused with the warmth of North American Maple in the tonal and outer plies, a whole new tonality will be released. The perfect balance between rumbling lows and sparkling highs is hit with Epic X-Over Striped, where this magic combination is combined with 3-ply Birch reinforcement rings and Poplar core plies for a sound and look that is unparalleled in drum making.

*Epic X-Over Striped Jazzette kit in Natural (LRS18JXN)\**

*Features 14"x18" Kick Drum w/new Rail Console/ette, a 5x14" Snare, 8"x12" Tom and 14"x14" Floor Tom.*

# EPIC X-OVER

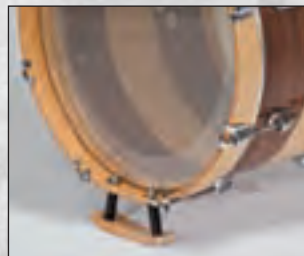
SERIES DRUMS



*Segmented inner shell creates unheard of tone.*



*Jazzette Kit features unique bass drum lift for better sound.*



*\*All kits are shell packs. Hardware and cymbals not included.*

**Epic Standard:** Birch Inner and Outer, Maple Core, Thin 6-ply Shell

Taking the bright, cutting tone of Birch and fusing it with the warmer qualities of Maple, Epic Series drums produce a wet, powerful sound that is at home in high-volume situations. Yet Epic's new ultra-thin 6-ply shell vibrates at a more even rate, sculpting a rich, vibrant balance between subtlety and sonic punishment. Accented by the new Classic Keystone Lug and Vintage Bronze hardware, Epic Series has truly found a home in the Ludwig Legacy.

*Epic Series ProBeat kit (LCEP24BX) in Natural/Blackburst (BB)\**

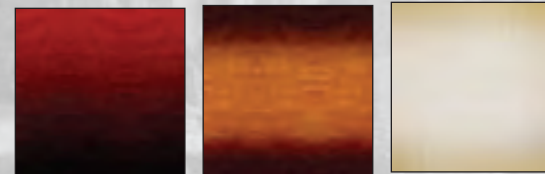
*Features 14"x24" Kick Drum, a 5x14" Snare, 7"x10" and 8"x12" Toms, and 14"x14" and 16"x16" Floor Toms.*

# EPIC

SERIES DRUMS



Epic is available in the following finishes: (all with Vintage Bronze Hardware)



Red Fade (DR) Mahogany Burst (MF) Arctic White (AW)

**Epic Modular:** All Birch, 6-ply Shell

Any drum set can be flexible in its set-up, but how many kits can be so flexible that they are completely different every time? Epic Modular fits the bill, as its two 8"x20" kick drums can either be connected together for one massive sound, or played separately as a double bass set. Arranging the included rack and floor toms in a myriad of patterns creates multiple creative set-ups for gigging drummers, or can be played as two separate kits for the interactive educator.



*\*All kits are shell packs. Hardware and cymbals not included.*



*Epic Series Modular kit (LCEP20MX) in Blue Fade (BL)\**

*Features two connectable 8"x20" Kicks, a 6x13" Snare, 7"x10" and 7"x12" Toms, and 12"x14" and 13"x16" Floor Toms. Also available in Tobacco Fade (TB).*

# ELEMENT SE SERIES DRUMS



## THE NEXT STEP

Sub-par gear used to be the only outlet for the drummer on the rise. However, today's up-and-coming player is more discerning than ever; demanding gear with custom options, sizing and appointments. Element Series Drums are the answer to that call, boasting a staggering array of features found previously only on customized boutique kits. Accessibly priced and fortified to take a pounding, Element is the key to the next level.

*Element SE Corey Miller kit (LRE22COREY)\**

*Features a 22"x22" Kick Drum, a 7x14" Snare, 8"x12" Tom and 14"x16" Floor Tom.*

**Element SE:** Select Hardwood Shells, Custom Wrap Finishes

Element SE -or Special Edition- is a destination for specialized collaboration kits, showcasing an evolving array of customized features for the gigging player. The first of these sets feature a choice between the classic flash of acclaimed tattoo artist Corey Miller, or Emerald Bandana Sparkle pattern. But, as these sets are limited to shorter production runs, they are just as likely to disappear as quickly as they came.



*Element SE Bandana Sparkle kit (LRE22BDANA)\**

*Features a 22"x22" Kick Drum, a 7x14" Snare, 8"x12" Tom and 14"x16" Floor Tom.*

*\*All kits are shell packs. Hardware and cymbals not included.*

# ELEMENT SERIES DRUMS

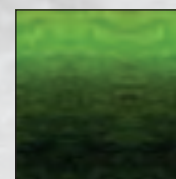
**Element Lacquer:** Marbled Birch Inner and outer thin 6-ply shell with Poplar Core

Element Lacquer drums employ two Poplar plys at the core of its thin 6-ply shell for added bite and volume. The stunning nature of the high-gloss finish over Marbled Birch wood is accentuated by our new Classic Keystone lugs, and drawn further with options like black hardware (limited only to select finishes.)

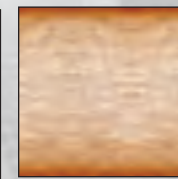
*Element Lacquer Series Power Fusion Kit (LCB22BX) in Black/Grey Burst (BF)\**

*Features 18"x22" Kick, a 5x14" Snare, 7"x8", 7.5"x10", and 8"x12" Toms and a 16"x16" Floor Tom.*

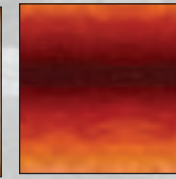
Element Lacquer is available in the following finishes:



Black-Green Fade w/ Black Hardware (BG)



Natural Burst w/ Chrome Hardware (NB)



Red Reverse w/ Chrome Hardware (RO)



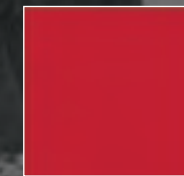
**Element:** Thin 6-ply Select Hardwood Shells

Right out of the gate, Element Series drums offer a dazzling array of custom-inspired options to the student-level player. Vibra-Band suspension mounts, our new Classic Keystone lug, and two new finishes are only the beginning, and combine to make Element Series the perfect choice for the next step.

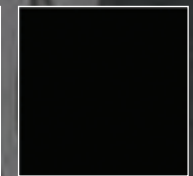
*Element Series Power (LCE22RX) configuration in Orange (5)\**

*Features 18"x22" Kick, a 6.5x14" Snare, 8"x10", 9"x12", and 10"x13" Toms and a 16"x16" Floor Tom.*

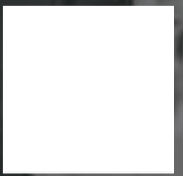
Element is available in the following finishes:



Wine (4)



Black (1)



White (3)



*\*All kits are shell packs. Hardware and cymbals not included.*